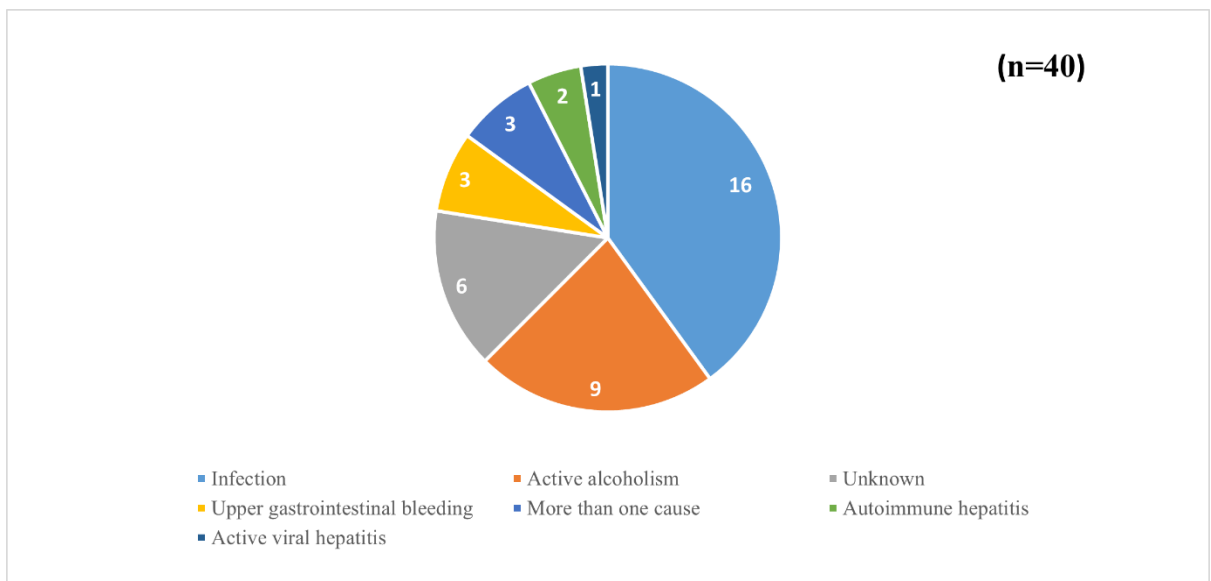
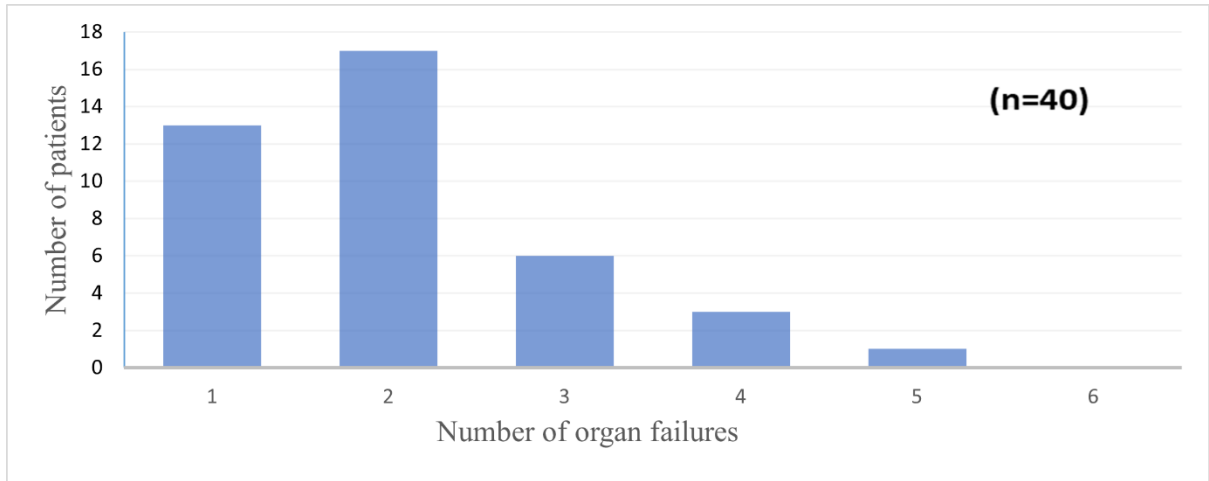


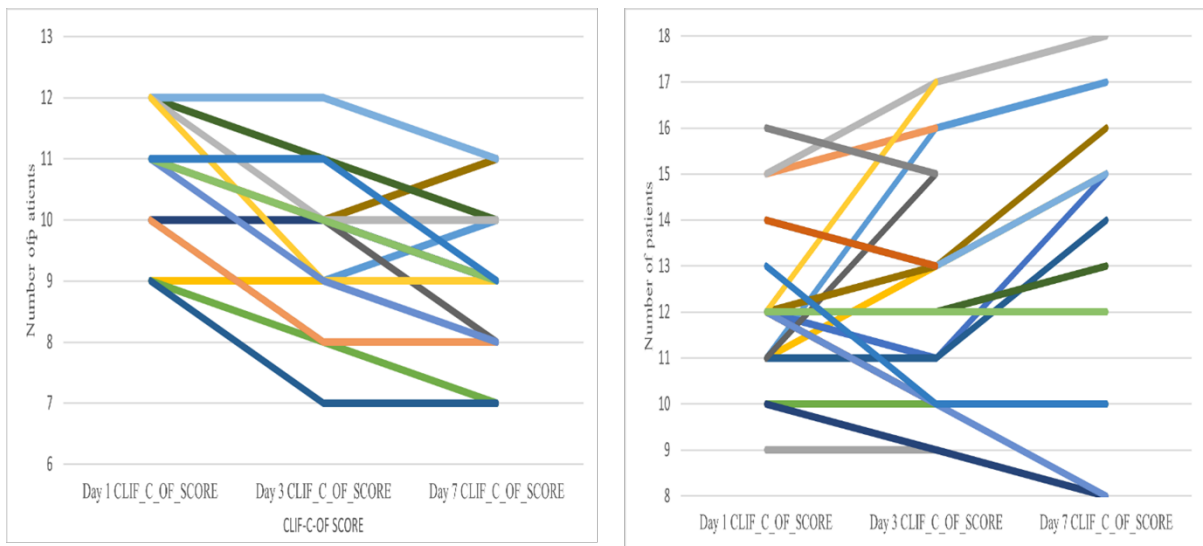
**Supplementary Figure 1. Etiology of cirrhosis**



**Supplementary Figure 2. Precipitating factors of ACLF**



**Supplementary Figure 3. Distribution of number of organ failures**



**Supplementary Figure 4. The trend of CLIF-C OF score of survivors and non-survivors on Day 90**

**Supplementary Table 1. Comparison of demographic and clinical characteristics between survivors and non-survivors on Day 28**

Variable	Survivors at day-28* (n=22)	Non-Survivors at day-28* (n=18)	p-value
Age, in years, (Mean ± SD)	42.9 ± 13.3	48.3 ± 11.3	0.81
Gender – Male, n (%)	19(86.4%)	15(83.4%)	0.82
Ascites at presentation, n (%)	17(77.3%)	17(94.4%)	0.14
Fever at presentation, n (%)	9(47.3%)	18(85.7%)	0.05
Altered sensorium, n (%)	7(31.8%)	14(77.8%)	<b>0.04</b>
Alcoholic cirrhosis, n (%)	16(76.2%)	17(94.4%)	0.19
Previous decompensation, n (%)	9(40.9%)	8(44.4%)	0.82
Active alcoholism, n (%)	11(64.7%)	10(58.8%)	0.73
Infection as precipitant, n (%)	6(27.3%)	13(72.3%)	0.22
Spider naevi, n (%)	6(27.3%)	12(66.7%)	0.13
ICU admission, n (%)	3(13.5%)	14(77.8%)	<b>&lt;0.001</b>
Bilirubin (mg/dL)	13.1 (7.5, 22.2)	19.5 (11.9, 27.6)	0.27
Creatinine(mg/dL)	1.2 (0.7, 2.3)	1.8 (1.5, 3.3)	0.10
INR, Median (IQR)	1.9 (1.3, 2.1)	2.9 (2.3, 4.3)	<b>&lt;0.001</b>
MAP (mm Hg)	72.1 ± 7.6	66.9 ± 7.4	0.19
SpO2/FiO2, Median (IQR)	469.6 (466.6, 471.4)	466.6 (465.2, 466.4)	0.14
Sodium (mEq/L), (Mean ± SD)	130.7 ± 3.5	129.5 ± 5.3	0.23
TLC (cells/10 <sup>9</sup> L), (Mean ± SD)	10.8 ± 6.2	13.2 ± 5.9	0.06
Liver failure, n (%)	15 (68.2%)	13 (72.2%)	0.78
Coagulation failure, n (%)	4 (18.2%)	13 (72.2%)	<b>0.009</b>
Cerebral failure, n (%)	7 (31.8%)	9 (50%)	0.34
Renal failure, n (%)	7 (31.8%)	7 (38.8%)	0.75
Circulatory failure, n (%)	0 (0%)	4 (22.2%)	0.33
Respiratory failure, n (%)	1 (4.5%)	2 (11.1%)	0.58
ACLF Grade I, n (%)	11	2	<b>0.001</b>
ACLF Grade II, n (%)	10	7	
ACLF Grade III, n (%)	1	9	
CLIF – C – ACLF score, (Mean ± SD)	44.64 ± 6.46	54.83 ± 7.88	<b>0.001</b>
CLIF – C – OF score day 1, Median (IQR)	10 (9.7, 11)	12 (11,14)	<b>0.001</b>
CLIF – C – OF score day 3, Median (IQR)	9 (8, 10)	13 (10.7, 15.2)	<b>0.001</b>
CLIF – C – OF score day 7, Median (IQR)	9 (8, 10)	14.5 (10.5, 15.7)	<b>0.001</b>
MELD score (Mean ± SD)	28.64 ± 5.47	36.78 ± 4.81	<b>0.001</b>
MELD – Na score (Mean ± SD)	29.82 ± 4.61	37.94 ± 4.95	<b>0.001</b>
CTP score, Median (IQR)	12 (10, 13)	13 (13, 13.2)	<b>0.001</b>

SD- standard deviation; IQR- Interquartile range; INR- International normalized ratio; MAP- mean arterial pressure; TLC- Total Leucocyte count; ACLF- acute on chronic liver failure; CLIF-C: Chronic liver failure consortium; OF- organ failure. MELD- Model for End-stage Liver disease; Na- sodium; CTP- Child-Turcott-Pugh score, ICU-Intensive care unit;

**Supplementary Table 2. Course of different ACLF grades**

ACLF grade Shifting to	ACLF-I at admission (n=13)		ACLF-II at admission (n=17)		ACLF-III at admission (n=10)	
	Day 3 (n)	Day 7 (n)	Day 3 (n)	Day 7 (n)	Day 3 (n)	Day 7 (n)
Grade 0	3	6	3	3	0	1
Grade 1	8	4	7	6	1	2
Grade 2	0	1	5	2	3	0
Grade 3	2	2	1	4	4	3
Mortality	0	0	1	2	2	4